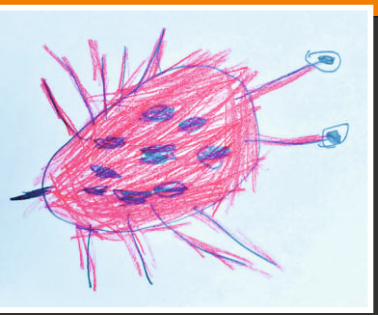


# The Burnhams

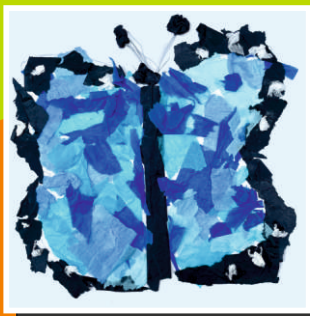
## Flower Show, Fete & Carnival



**Saturday 13th July 2024**



**Exhibitors Schedule & Entry Form**





# A new home is just the beginning

Sowerbys is delighted to support the Burnham Market Flower Show.  
We wish good luck to all of the entrants.

[START YOUR SEARCH SOWERBYS.COM](https://www.sowerbys.com)

## SOWERBYS

SALES • LETTINGS • PROPERTY MANAGEMENT • LAND & NEW HOMES



Burnham Market  
Dereham  
Fakenham  
Holt  
Hunstanton

King's Lynn  
Norwich  
Watton  
Wells-next-the-Sea

Market Place  
Burnham Market  
King's Lynn  
PE31 8HD  
01328 730340

# THE BURNHAMS FLOWER SHOW 2024

This schedule lists all the different classes that may be entered in the Flower Show which takes place in the marquee on Burnham Market playing field on Saturday July 13th. You can enter as few or as many classes as you wish, with a maximum of 2 entries per class; the entry fee is 20p per entry, entries for children are free. The entry forms on page 18 can be copied if needed or they can be downloaded from the flowershow website [www.burnhamsflowershow.co.uk](http://www.burnhamsflowershow.co.uk). Please don't think you have to be an expert to enter – everyone is welcome to have a go!

If you have any queries relating to the competition, please check the

Instructions and Tips sections on page 10.

Prizes for the classes (except children's) are: 1st - £2, 2nd - £1.50, 3rd - £1. Please hand completed entry forms and fees in to Burnham Market Post Office, Burnham Market Garage or Burnham Market Stores or post to Diana Black, 6 The Pightle, Burnham Thorpe, PE31 8HT by 1pm on Friday 12th July.

(Entries can also be made in the tent on the day until 9.30am, but at the higher fee of 40p for adults and 20p for children).

Good luck!

## THANK YOU!

**TO ALL THE LOCAL BUSINESSES WHO HAVE SUPPORTED US SO GENEROUSLY**

Sowerbys \* Fakenham Garden Centre \* Dempsey Heating \* Gurneys  
Tuscan Farm Shop \* Trevor Manning \* Humble Pie \* GJL Animal Foods  
May Construction \* Norfolk Hideaways \* Burnham Market Stores \* Tillys  
Burnham Market Garage \* Burnham Market Post Office \* Bedfords  
Hamilton Antiques \* BB Textiles \* Pentney House \* Barefoot Living  
Brian Rix Ltd. \* Howells Butchers \* Satchells \* Boudica \* Aura 37 \* The Hoste  
Urban Armour \* Clothesline \* Lime Green \* Gun Hill Clothing Co Ltd  
NBS Construction \* Whitehall Farm B&B \* The Lord Nelson, Burnham Thorpe  
Sowerbys Holiday Cottages \* Norfolk Pallet Service

Thank you to the children from Burnham Market School for their wonderful drawings.

Programme design and printing [www.saintdesigns.co.uk](http://www.saintdesigns.co.uk)

Thank you to all individuals for their generous donations.

# FLOWERS POT PLANTS FRUIT AND VEGETABLES (Section A)

All flowers and vegetables in this section must have been grown by the person exhibiting. Pot plants, if purchased, must have been "grown on" by the exhibitor and been in their possession for at least 6 months.

## CUT FLOWERS

**sponsor Hamilton Antiques & Fakenham Garden Centre**

- 1 A gent's buttonhole.
- 2 A lady's buttonhole
- 3 Four sprays of floribunda roses
- 4 One hybrid tea rose
- 5 Vase of four roses
- 6 Best bowl of roses (Winner will also be awarded the Tom Tweed cup)
- 7 Five pinks
- 8 Four kinds of cut flowers, shown in separate containers
- 9 Vase of ten sweet peas
- 10 3 stems of any flower (the same variety) in a vase
- 11 Best bowl of flowers
- 12 A vase of your favourite bloom(s)

## POT PLANTS

**sponsor Clothesline & Fakenham Garden Centre**

- 13 One pot plant (foliage)
- 14 One pot plant (flowering)
- 15 One cactus or cacti in a pot
- 16 One succulent or succulents in a pot
- 17 One orchid in a pot
- 18 A favourite pot plant or plants.
- 19 A patio container

## SOFT FRUIT

**sponsor Lime Green & Fakenham Garden Centre**

- 20 Dish of redcurrants on stalks, ten stalks
- 21 Dish of blackcurrants on stalks, ten stalks
- 22 Ten raspberries with stalks
- 23 Ten green or yellow gooseberries
- 24 Ten red gooseberries
- 25 Three soft fruits, shown separately, ten of each
- 26 Any fruit or fruits not mentioned above

## Brian Rix Ltd

### Building Contractors

*Established 1981*

- **New Builds** - **Renovations** -
- **Extensions** - **Conversions** -



Raising Standards. Protecting Homeowners

# 01328 738786

[info@brianrix-builders.co.uk](mailto:info@brianrix-builders.co.uk)

Red House, Church Walk  
Burnham Market PE31 8DH

[www.brianrix-builders.co.uk](http://www.brianrix-builders.co.uk)



## VEGETABLES

**sponsor Gun Hill Clothing & Fakenham Garden Centre**

- 27 Collection of five vegetables on a tray
- 28 Heaviest onion with top as grown
- 29 Three courgettes
- 30 Five white potatoes – any type
- 31 Five coloured potatoes – any type
- 32 Ten pods of peas
- 33 Ten pods of broad beans
- 34 Ten pods of French beans
- 35 Five carrots with tops – any type
- 36 Ten dressed shallots
- 37 Five onions with tops as grown (not peeled)

- 38 Five beetroot with tops
- 39 Two cucumbers
- 40 Two cabbages with stalks
- 41 Five radishes with tops on a plate
- 42 Two lettuces
- 43 Five tomatoes (any colour)
- 44 Three bulbs of garlic
- 45 Collection of five pieces of salad on a tray
- 46 Any other vegetable(s) not mentioned above
- 47 A mutant or rude vegetable

*The Douglas Webdale cup will be awarded to the person scoring the most points in the vegetable section.*

## OTHER COMPETITIONS

*Entries for classes 48 to 51 must come from no further than 6 miles from Burnham Market.*

### 48 **BEST HANGING BASKET**

**sponsor Brian Rix Ltd**

(1st £15, 2nd £10, 3rd £5)

### 49 **BEST GARDEN OR ALLOTMENT**

**sponsor NBS Construction**

(1st £25 & the Burnhams Landscape Cup, 2nd £20, 3rd £15)

### 50 **TALLEST SUNFLOWER**

**sponsor NBS Construction**

(1st £15, 2nd £10, 3rd £5)

### 51 **A SCARE CROW**

**sponsor Whitehall Farm B&B**

(1st £15, 2nd £10, 3rd £5)

### 52 **A POTATO IN A BUCKET**

**sponsor NBS Construction**

(1st £15, 2nd £10, 3rd £5)  
bucket should not be more than 10 litres in volume) - bring the whole bucket with the potato growing in it.

*Please make your entries for Best Garden, Scarecrow & Best Hanging Basket at least one week prior to the show date. Please contact Diana Black on 01328 730778 to arrange a time for the judges to visit.*

# PHOTOGRAPHY

sponsor Sowerbys Holiday Cottages & Trevor Manning

53 People at Work

54 In the Sky

55 Free choice

56 Water

*The Eileen Sibson Trophy will be awarded to the winner of class 56*

*Photographs may be in colour or black & white, maximum size 7"x5", and NOT framed or mounted. Each class has a sub-section for 16 yrs and under.*

# FLOWER ARRANGING

sponsor AURA 37

57 A floating arrangement in a bowl of water (accessories may be used)

58 An arrangement of herbs and weeds

59 An arrangement in a tin can

60 An arrangement including vegetables in any container

61 A petite arrangement, not to exceed 6" overall

*Flowers and foliage etc used may be obtained from any (legal) source.*

# COOKERY

sponsor Humble Pie

62 A carrot cake

63 5 savoury muffins

64 5 biscuits /cookies

65 A loaf of bread (bread maker)

66 A loaf of bread (handmade)

67 A sweet or savoury vegan treat

68 Bara Brith loaf (using recipe on page 14)

69 1 jar of jam/jelly

70 1 jar of marmalade

71 1 jar of chutney

# HOMEMADE WINE & DRINK

sponsor Satchells of Burnham Market

72 A bottle of homemade wine (still or sparkling)

73 A fruit liqueur (eg sloe gin, plum rum etc)

74 A bottle of lemonade

75 A bottle of homemade fruit cordial (eg elderflower, blackcurrant)

76 A bottle of homemade beer

*The Audrey Mahon Cup will be awarded to the person aged 16 or under scoring the most points*

# HANDICRAFT

sponsor BB Textiles & Urban Armour

- 77 A piece of jewellery
- 78 A handmade candle
- 79 A greetings card in any medium
- 80 A bookmark
- 81 An item of clothing
- 82 A crocheted or knitted item
- 83 An item made from soft material
- 84 An item made from hard material (eg wood, metalwork, stained glass etc)
- 85 An embroidery picture or sampler (own design)
- 86 An embroidery picture or sampler (from a kit)

- 87 A picture or drawing (framed or unframed)
- 88 A work in progress (any material)
- 89 Any other piece of handicraft not mentioned above

Items in Section E should not have been exhibited previously at this show

The Ivie Garfitt Cup, will be awarded to the best exhibit made by someone aged 16 or under



Urban Armour & BB Textiles  
are delighted to support the  
Burnhams Flower Show & Carnival



# CHILDREN

The prizes for this section are 1st – £2.50, 2nd – £2, 3rd – £1.50

## A PICTURE

**sponsor Gurneys Fish Shop**

This year, all age groups have been given the title 'A Wonderful Garden' any medium may be used. The age groups are as follows:

- 90 Nursery (2–3 yrs)
- 91 Nursery (3–4 yrs)
- 92 Year R (4–5 yrs)
- 93 Year 1 (5–6 yrs)
- 94 Year 2 (6–7 yrs)
- 95 Year 3 (7–8 yrs)
- 96 Year 4 (8–9 yrs)
- 97 Year 5 (9–10 yrs)
- 98 Year 6 (10–11 yrs)
- 99 12–16yrs

## HANDICRAFT

**sponsor Boudica**

- 100 Something made from lego (your own design) maximum size 20cm x 20cm
- 101 A potato head made using fruit and vegetables
- 102 A junk model
- 103 A collage
- 104 An item made from soft material (knitting, crochet, sewing)
- 105 A limerick, written in your best handwriting (no bigger than A5)

106 A flower arrangement in an egg cup

Each class will be judged in 3 age groups, 5–7, 8–11, 12–14 yrs

107 3–5 yrs – A decorated paper plate

## COOKERY

**sponsor The Lord Nelson, Burnham Thorpe**

- 108 3 decorated biscuits (3–5 yrs)
- 109 3 fruit scones (6–9 yrs)
- 110 3 cheese straws (10–14 yrs).

## GARDENING

**sponsor Tillys**

- 111 Something I have grown (vegetables)
- 112 Something I have grown (flowers or pot plant)
- 113 A potato in a bucket (1st £15, 2nd £10, 3rd £5) bucket should not be more than 10 litres in volume) – bring the whole bucket with the potato growing in it.
- 114 Tallest sunflower (1st prize £20, 2nd £15, 3rd £10)
- 115 Best garden (1st prize £20, 2nd £15, 3rd £10)
- 116 A Scarecrow (1st prize £20, 2nd prize £15, 3rd prize £10)

*Classes 114, 115 & 116 will be judged during the week before the show; can be no further than 6 miles from Burnham Market, please phone Diana Black on 01328 730778 to arrange a time for the judges to visit.*

# INSTRUCTIONS FOR EXHIBITORS

## ENTRIES

Please hand in completed entry forms and fees to Burnham Market Post Office, Burnham Market Garage or Burnham Market Stores, by 1pm on Friday July 12th. Entries will be accepted on the day (until 9.30am), but at an increased entry fee of 40p for adults and 20p for children.

## ON THE DAY

The marquee will be open to receive entries from **8am**. Please report to the Committee table in the marquee on arrival, to be booked in and receive your exhibit cards. Exhibits must then be arranged and displayed in the appropriate section of the marquee.

## JUDGING

All exhibits must be in place by **10am**. Judging will start at **10.15am**

## REMOVAL OF EXHIBITS & AUCTION

Exhibits must remain in place until **4.30pm**, so that they can be seen and enjoyed by as many people as possible. After this time they can be removed or left in place and donated to the auction, which will take place at approximately **4.45pm** in the marquee.

## PRIZES

The prize giving for the main trophies will take place in the arena at approximately **4.15pm**. Cash prizes for the individual classes can be collected from the Committee table between 4.30 – 5pm, by presenting the winning exhibit cards.

**Section A:** 1<sup>st</sup> £30 2<sup>nd</sup> £20 3<sup>rd</sup> £10, Reg Baldry Cup (best exhibit in Section A from a Burnhams resident) £10, Tom Tweed Cup £25, Douglas Webdale Cup (most points in vegetable section £10) Best garden 1<sup>st</sup> £25 2<sup>nd</sup> £20 3<sup>rd</sup> £15, Best hanging basket 1<sup>st</sup> £15 2<sup>nd</sup> £10 3<sup>rd</sup> £5, Best scarecrow 1<sup>st</sup> £15 2<sup>nd</sup> £10 3<sup>rd</sup> £5

**Photography:** Adult £20, 16 and under £20, Eileen Sibson trophy £25

**Flower Arranging:** £20

**Cookery:** £20, Audrey Mahon cup £10, Homemade wine & drinks £20

**Handicraft:** £20, Ivie Garfitt Cup £10

**Childrens:** 1st £20, 2nd £15, 3rd £10

**Best in Show:** Pentney House Cup



# TIPS FOR EXHIBITORS

The first and most important thing, is that exhibiting should be a fun experience open to anyone, so please have a go. Here are some tips to help you;

## VEGETABLES

Remember, biggest is not always best (except for class 28!).

Your veg should be of equal size, free from blemishes, no pest or disease damage, displayed evenly, clean from soil, and fresh not limp (covering with a damp tea towel helps).

## FLOWERS & PLANTS

Flowers should be displayed nicely in a vase of clean water. Flowers/plants should be free from any damage from insects, disease and weather.

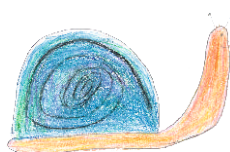
If you have a few damaged petals or leaves you can remove some, but do not over do it. Remember, if a class says five of something, please put in five, not four or six!

## COOKERY

Marks are awarded for appearance and flavour. If more than 1 is specified, they should be even in shape, size and colour.

For jams and preserves, jars and lids should show no sign of ageing, the labels should be clear and well put on. Wax discs are needed when using cellophane, but not screw top lids. Jars should be filled to the top, to allow for shrinkage.

*Any queries regarding entries, please call Diana Black 01328 730778.*



---

## Burnham Market Sunday Tea Party Group

*Monthly tea parties for over 75s*

*If you, or someone you know, would like to attend as a guest, volunteer as a driver, or host an event, please contact Sarah Reed 07976 287 952*







TUSCAN FARM SHOP

WINE + FOOD,  
FROM OUR FARM,  
SHOP OR DELIVERY.

Shop: 50 Market Place, Burnham Market, Norfolk PE31 8HF

Email: [Hello@tuscanfarmshop.com](mailto:Hello@tuscanfarmshop.com) • Tel: +44 (0)1328 730856 • Instagram: [@tuscanfarmshop](https://www.instagram.com/tuscanfarmshop)

WOODFORDE'S  
BREWERY



~ THE ~  
**LORD NELSON**

*Discover*  
**YOUR NEW  
FAVORITE**



01328 854988 | [www.nelsonslocal.com](http://www.nelsonslocal.com)

Walsingham Road, Burnham Thorpe, Norfolk, PE31 8HL



**Construction**

**BUILDING THOUGHTFUL SPACES**

[nodbutcherandson@hotmail.com](mailto:nodbutcherandson@hotmail.com) | 07876683111





Platinum Trusted  
Service Award

2024

feefo

Larks Rise, Burnham Market

# norfolk hideaways

coastal and country holiday retreats



*Sponsor of the Fancy Dress  
Competition and proud to be  
supporting the local community*

## Open your doors to staycations

We know that choosing an agency to let your property can be a big decision. At Norfolk Hideaways our experienced local team is here to make sure the whole process of letting your holiday home is as simple as possible from day one.

*Benefits include:* Excellent occupancy levels | Competitive commission rate  
Peace-of-mind damage cover | No restrictions on the use of your property  
A Marketing or Marketing and Managed service | Professional photography

*Get in touch today and ask for your **FREE Property Letting Guide***



**[norfolkhideaways.co.uk](https://norfolkhideaways.co.uk) | 01328 887 658**

Offices in Burnham Market, Wells-next-the-Sea and Holt

# THE BURNHAMS HORTICULTURAL SOCIETY OFFICERS

President: Cindy Stimpson  
Chairman: Tony Rout  
Secretary: Diana Black  
Treasurer: Judith Rout

Members:  
Shirley Willsher  
Caroline Stuckey  
Jamie Rout  
Annette Lowe  
Jane Skeet  
Ann Smith  
Sarah Reed

## BARA BRITH LOAF

### Ingredients

175g currants, 175g sultanas, 225g light muscovado sugar, 300ml strong hot tea. 275g self-raising flour, 1 large egg, beaten.

### Method

Measure fruit and sugar into a bowl and pour over hot tea. Leave overnight. Pre-heat oven to 150C. Grease a 900g (2lb) loaf tin. Line the base with nonstick baking parchment. Stir the flour and egg into the fruit mixture, mix thoroughly, then turn into the prepared tin and level the surface. Bake for about 1.5 hours or until risen and firm to the touch. Leave to cool for 10 minutes, then turn out, peel off the parchment and finish cooling on a wire rack.

## GJL ANIMAL FEEDS LTD



**CLIPBUSH BUSINESS PARK  
FAKENHAM NR21 8SX**

Find us on Facebook &  
follow us on Twitter for all the  
latest offers & news

Call now for me to  
come & deliver to your  
door, stable, farm or  
paddock!

**01328  
851351**

**office@gjlanimalfeeds.co.uk  
www.gjlanimalfeeds.co.uk**



*Award Winning*  
**FARMHOUSE BED & BREAKFAST**  
AT  
**WHITEHALL FARM**  
BURNHAM THORPE

*Hosted by Barry and Valerie Southerland*



T: 01328 738 416  
M: 07787 551828

[www.whitehallfarm-accommodation.com](http://www.whitehallfarm-accommodation.com)

# **GALA INFORMATION**

**FOR SATURDAY 13TH JULY 2-5PM**

Please meet on the green in front of Burnham Westgate church at 1.15pm, ready for judging.

## **FANCY DRESS AND FLOATS**

**sponsor Norfolk Hideaways**

Classes will be judged as follows, with prizes of £20, £15 and £10 per class.

**5 years & under; 6–10 years; 11–16 years; Adult**

**Best decorated pram, buggy, bike, mobility scooter or wheel barrow**

£30, £20 & £10

**Best decorated float** 1st £100 (plus Arthur Howell Cup), 2nd £60, 3rd £40, 4th £20

**Best decorated tradesman's vehicle** 1st prize £50, 2nd £40, 3rd £30

## **THE PHOENIX PIPES & DRUMS**

**sponsor Sowerby's**

will lead the parade from the Green at approximately 1.40pm, and arrive at the playing field for 2pm. Upon arrival, prizes will be awarded to the float & fancy dress winners.

Please note that the Society is unable to provide insurance cover for persons or vehicles used in the parade.

## **ACTIVITIES & ENTERTAINMENT**

**sponsor Barefoot Living**

Events taking place on the field include a further display by the marching band, a dancing display by Rollason Stage School, as well as the children's races.

There will also be craft stalls, side shows, children's entertainers, the beer tent, teas, Gray's Funfair and much more.

Entry to the field is £2 – Cash Only. 12s and under are free.

**SORRY, NO DOGS ALLOWED.**

As with any event of this nature, circumstances may dictate changes to the planned programme and the committee reserve the right to make amendments at their discretion.

# MAY CONSTRUCTION



## BUILDING CONTRACTORS

Building a great reputation in Norfolk

**Tel. 01328 730256**

**Mob. 07776 234477**

**New builds - renovations - extensions - alterations**

**email: [jason@mayconstruction.co.uk](mailto:jason@mayconstruction.co.uk)**

**[www.mayconstruction.co.uk](http://www.mayconstruction.co.uk)**



## Dempsey Heating Ltd.



**HEATING & PLUMBING SPECIALISTS • GAS & OIL HEATING  
BOILER SERVICING • BATHROOM & KITCHEN DESIGN AND  
INSTALLATION • AIR SOURCE HEAT PUMPS**

*Your Local Experts - Great Service - Competitive Prices*

## Contact us today!

**Honeywell**



**Vaillant**

**AQUALISA**

**VIESMANN**



**WARMFLOW**



**GRANT**



**glow worm**  
Keeping Britain Glowing

**01328 862189**

**[www.dempseyheating.com](http://www.dempseyheating.com)**

George Edwards Road, Industrial Estate, Fakenham, NR21 8NL



# The Burnhams Horticultural Society Flower Show

## ENTRY FORM

Please fill in your name, address, telephone number and the classes you are entering overleaf. Then detach the form and either put your completed form and fees in the special envelope in the Burnham Market Post Office, Burnham Market Garage or Burnham Market Stores or post to:

Diana Black, 6 The Pightle, Burnham Thorpe, PE31 8HT  
to arrive no later than Friday 12th July.

Please send 20p per entry - FREE entry for the childrens section

Exhibitors may make no more than two entries per class

Please turn over these entry forms to fill in your name, address, phone number and classes entered (forms may be photocopied)

---

## The Burnhams Horticultural Society Flower Show

### ENTRY FORM - PHOTOGRAPHY

Your photographs may be in colour or black & white, maximum size 7"x5"  
BUT NOT FRAMED OR MOUNTED.

This entry form, together with the photographs, must be submitted AT LEAST TWO DAYS BEFORE THE SHOW DAY (to allow time to arrange on display boards).

There is a 20p entrance fee for each photograph. Please fill in your name, address, telephone number and the number of photographs you are entering overleaf.

Then detach the form and hand your photographs, completed entry form and fees in to the special envelope in Burnham Market Post Office, Burnham Market Garage or Burnham Market Stores, or post to: Diana Black, 6 The Pightle, Burnham Thorpe, PE31 8HT.

# ENTRY FORM

Class(es) entered .....

.....

Total fee enclosed (20p per entry). .....

Name .....

Address .....

.....

.....

Telephone No: .....

Children's age if 16 or under for sections D, E & F .....

---

## ENTRY FORM - Photography

Class(es) entered .....

.....

Total fee enclosed (20p per entry) .....

Name .....

Address .....

.....

.....

Telephone No: ..... Age (16 or under) .....

No. of photographs (max two per class) .....



# BAREFOOT

## RETREATS

Discover our carefully curated collection of luxury self catering properties, from the remarkable to the quintessential, set along the North Norfolk coast from Snettisham to Wells-Next-The-Sea.

[www.barefootretreats.co.uk](http://www.barefootretreats.co.uk)  
01485 512 245



## THE RAILWAY

FIRST CLASS ACCOMMODATION

Luxury Boutique Hotel | 8 Unique Bedrooms | Honesty bar | Secluded Garden | Sunken Hot Tub

[www.barefootretreats.co.uk/the-railway](http://www.barefootretreats.co.uk/the-railway) | 01485 512 245  
Burnham Market



# BAREFOOT

## LIVING

Independent Lifestyle Store | Unique Interiors | Gifts | Fashion

[www.barefoot-living.co.uk](http://www.barefoot-living.co.uk)  
01328 738 100  
14 North Street  
Burnham Market | PE31 8HG



# FAKENHAM

## GARDEN CENTRE



PETS & AQUATICS



COFFEE SHOP

OPEN 7 DAYS A WEEK

Monday - Saturday 9am - 5.30pm

Sunday 10am - 4pm

Tel: (01328) 863380

[www.fakenhamgardencentre.co.uk](http://www.fakenhamgardencentre.co.uk)